

CONSTANCE  
EPHELIA  
MAHÉ, SEYCHELLES

UNWIND IN A  
NATURAL HAVEN  
OF BLISS

FACTSHEET



# CONSTANCE EPHELIA

Revive mind, body and soul in a 5\* natural 120-hectares park offering that rarest, most precious commodity: space, dazzling, vibrant beauty, unspoiled beaches, tropically verdant and peaceful. Endless options for sports and activities will please those who enjoy a more dynamic break. Our wellness spa, the largest in the Indian Ocean, will pamper and indulge you. Family-friendly, casual luxury to share.



## LOCATION

Situated on two of the most beautiful beaches on the island of Mahé, overlooking the marine national park of Port Launay, Constance Ephia is a 40 minutes drive from Seychelles International Airport and 30 minutes from the capital, Victoria.

## FACILITIES



RESTAURANTS & BARS



SPA



HONEYMOON & WEDDING



TENNIS



GROUPS & INCENTIVE



CONCIERGERIE



DIVING



KIDS CLUB



SOMMELLERIE

## HIGHLIGHT OF YOUR STAY

Have a traditional massage in the largest spa of the Indian Ocean. Enjoy a rush of adrenaline with a tyrolienne, canoeing or climbing excursion. Live between a green and a marine national park.

## CONTACT

### Constance Ephia Seychelles

Port Launay, Mahé – Seychelles  
Telephone number: (248) 439 5000  
Administration Fax: (248) 439 5001  
info@epheliasort.com

### Constance Hotels & Resorts

40609 Centre de Flacq, Mauritius - Indian Ocean  
www.constancehotels.com

### Central Reservation Office

Telephone number: (230) 402 27 77 / 402 27 74  
Fax: (230) 402 26 16  
resa@constancehotels.com

### Head Office

Telephone Number: (230) 402 29 00  
Fax: (230) 402 29 09  
mkt@constancehotels.com



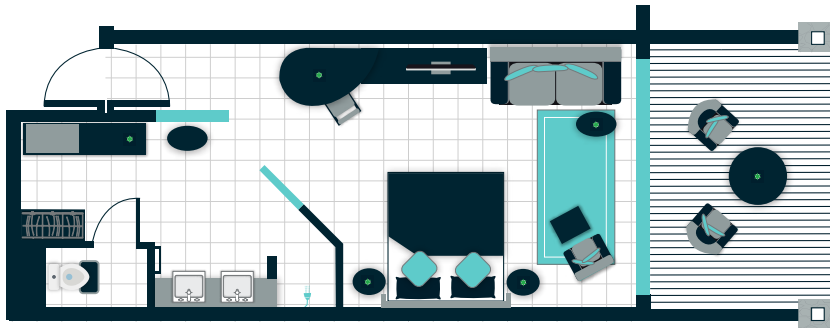
— < ACCOMMODATION > —



< 42 TROPICAL GARDEN VIEW ROOMS >

(48m<sup>2</sup>) for a maximum of 2 adults

Combining style and functionality, the rooms with its contemporary decoration offers the feeling of space. The spacious bathroom with its smart glass (possibility to either keep it transparent or opaque for privacy) and its walk-in shower offers an extra dash of luxury. Each room also feature air-conditioning, ceiling fan, WC, hairdryer, private balcony with access to the garden, LCD TV, mac mini, telephone, mini-bar, tea and coffee facilities, safe and complimentary WI-FI.

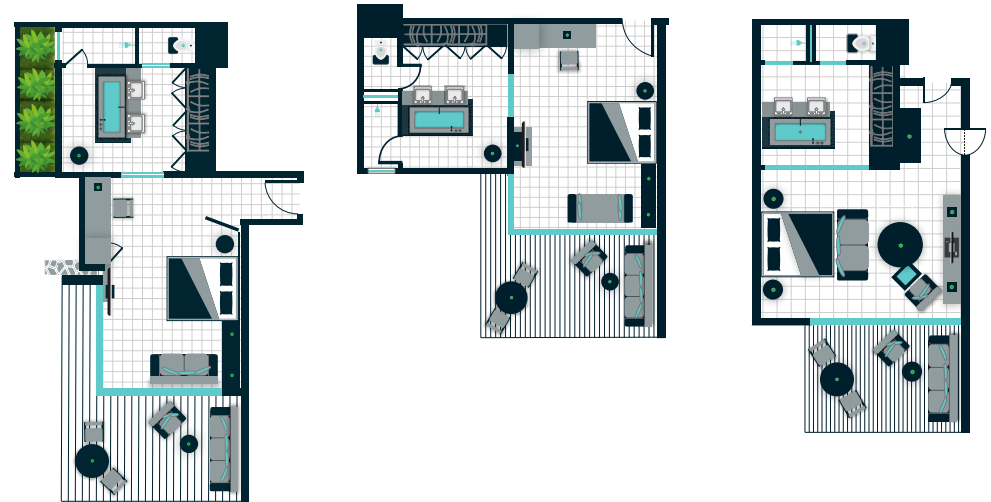


< 184 JUNIOR SUITES >

(62m<sup>2</sup>) 28 of them are interconnecting

For a maximum of 2 adults + 1 child under 13 yrs (sofa bed) + 1 baby cot

All suites feature air-conditioning, ceiling fan, bathroom with bath tub, double vanities, separate shower, WC, hairdryer, sitting area, LCD TV, mac mini, telephone, mini-bar, tea and coffee facilities, complimentary Nespresso machine with capsules, safe and complimentary WI-FI.



— > ACCOMMODATION < —

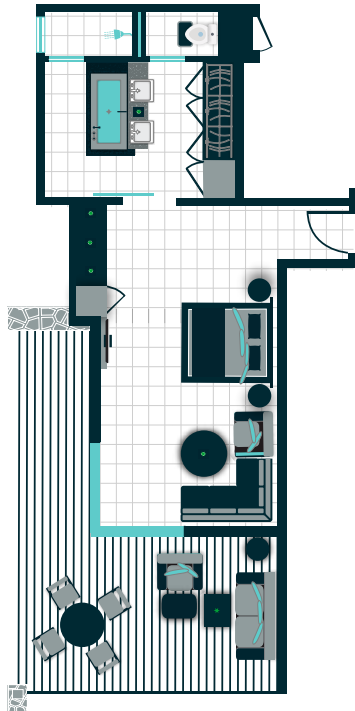
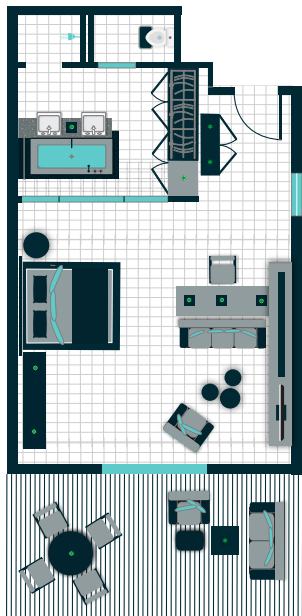


— > 40 SENIOR SUITES < —

(72m<sup>2</sup>) 4 of them are interconnecting

For a maximum of 3 adults or 2 adults + 1 child under 13 yrs (sofa bed) + 1 baby cot

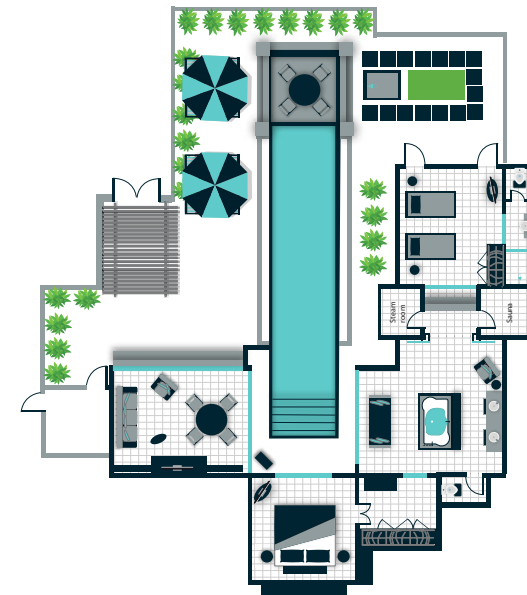
All suites feature air-conditioning, ceiling fan, bathroom with bath tub, double vanities, separate shower, WC, hairdryer, sitting area, LCD TV, mac mini, telephone, complimentary Nespresso machine with capsules, mini-bar, tea and coffee facilities, safe and complimentary WI-FI.



— > 10 FAMILY VILLAS 2 BEDROOMS WITH PRIVATE POOL < —

(330m<sup>2</sup>) 2 bedrooms for a maximum of 4 persons + 1 baby cot

Villas of two bedrooms with spacious en-suite bathroom, private swimming pool, pergola for relaxation and aperitifs, LCD TV, mac mini, mini-bar, tea and coffee facilities, Nespresso machine with capsules, complimentary bicycles and complimentary WI-FI.



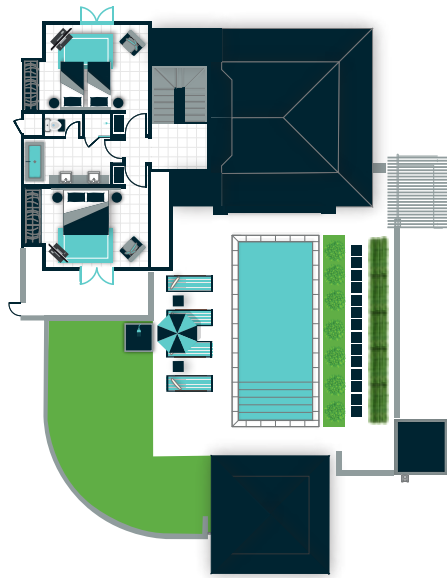
— > ACCOMMODATION < —



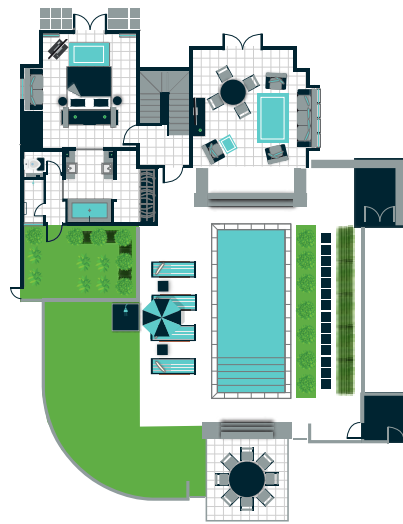
— > 12 FAMILY VILLAS 3 BEDROOMS WITH PRIVATE POOL < —

(350m<sup>2</sup>) 3 Bedrooms, for a maximum of 6 adults  
+ 1 child under 13 yrs (sofa bed-master bedroom) + 1 baby cot

The villas spaciouly designed and stylishly decorated consist of three bedrooms (one master bedroom with an en suite bathroom and two other bedrooms sharing one bathroom). In the courtyard a private swimming pool as well as an outside dining kiosk. Other facilities are: LCD TV, mac mini, mini-bar, tea and coffee facilities, complimentary bicycles, Nespresso machine with capsules and complimentary WI-FI.



First Floor



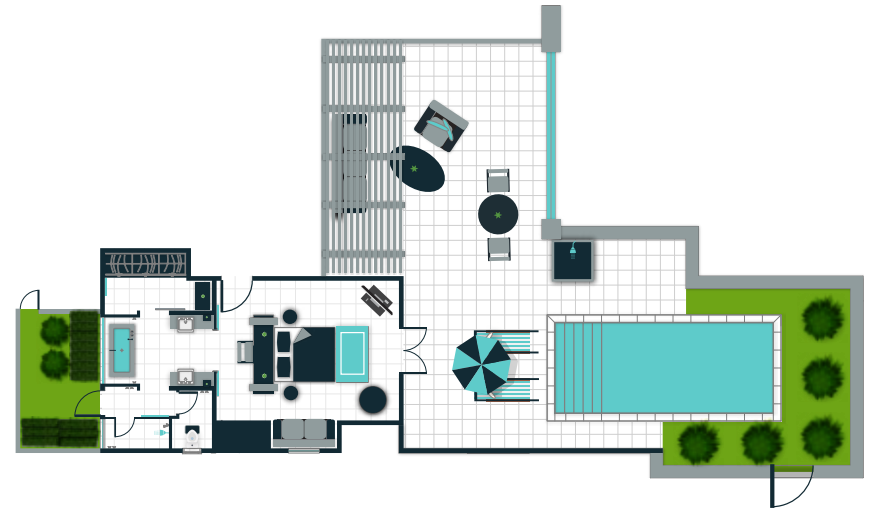
Ground Floor



— > 8 BEACH VILLAS 1 BEDROOM WITH PRIVATE POOL < —

Villa of 1 bedroom around 240m<sup>2</sup>, for a maximum of 2 adults  
+ 1 baby (child less than 2 years)

Situated on the North beach of Port Launay these one bedroom villas offer the ultimate beachside accommodation. Each is spaciouly designed and stylishly decorated with large en-suite bathrooms, private swimming pool, pergola for relaxation, LCD TV, mac mini, mini-bar, tea and coffee facilities, Nespresso machine with capsules, complimentary bicycles and complimentary WI-FI.





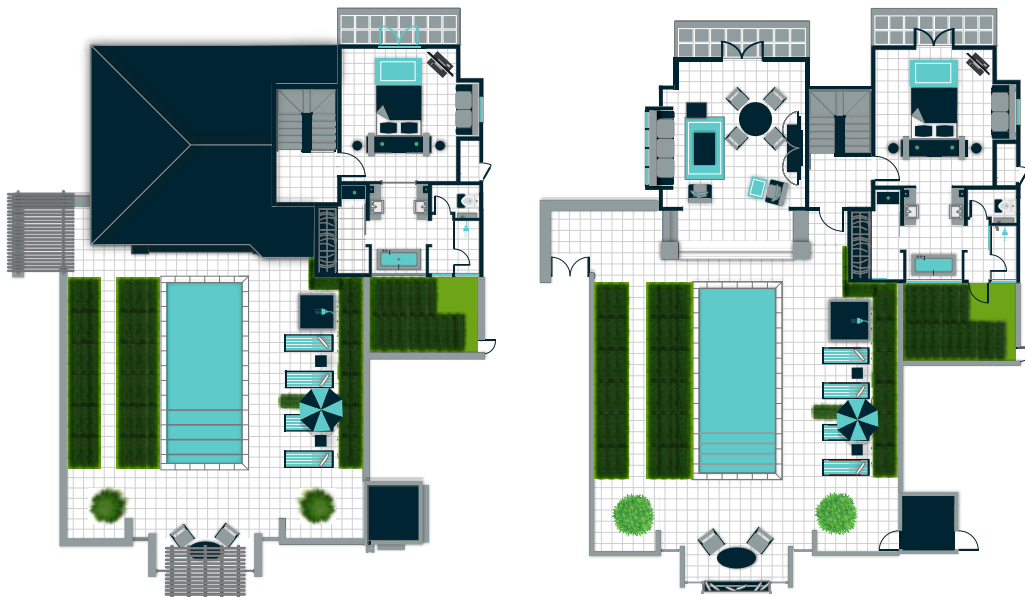
—> ACCOMMODATION <—



—> 8 BEACH VILLAS 2 BEDROOMS WITH PRIVATE POOL <—

Villa of 2 bedrooms (370m<sup>2</sup>), for a maximum of 4 adults + 2 child under 13 yrs (sofa bed) + 1 baby cot

Situated on the North beach of Port Launay these two bedroom villas offer the ultimate beachside accommodation. Each is spaciouly designed and stylishly decorated with large en-suite bathrooms, private swimming pool, pergola for relaxation and aperitifs, LCD TV, mac mini, mini-bar, tea and coffee facilities, Nespresso machine with capsules, complimentary bicycles and complimentary WI-FI.



First Floor

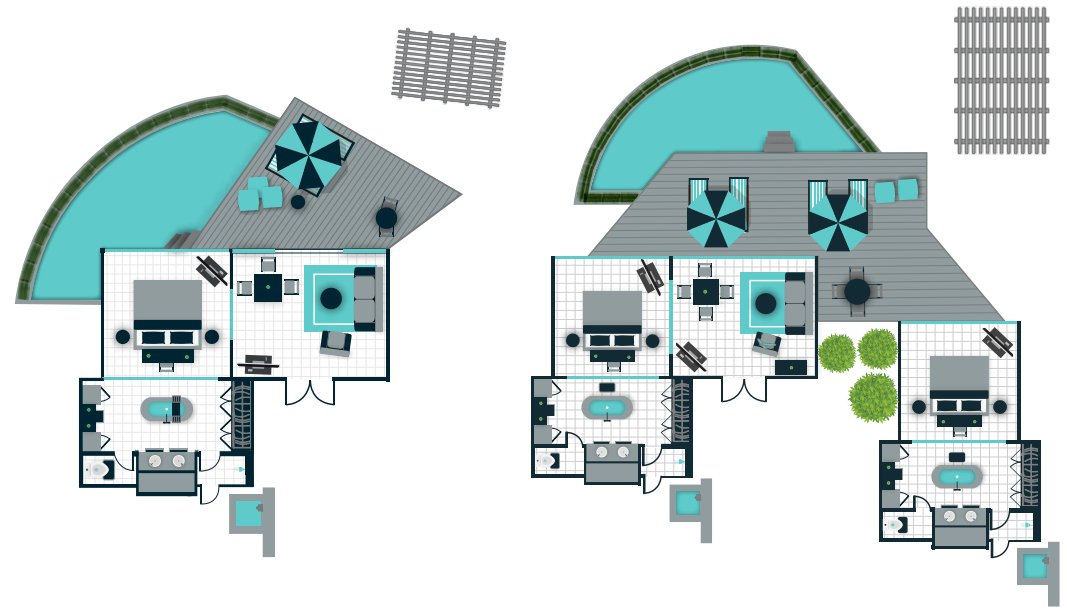
Ground Floor



—> 8 HILLSIDE VILLAS WITH PRIVATE POOL <—

5 villas (120m<sup>2</sup>) of 1 bedroom, for a maximum of 2 adults  
3 villas (220m<sup>2</sup>) of 2 bedrooms, for a maximum of 4 adults

Overlooking the Port Launay Marine Park, the hillside villas (either one or two bedrooms) feature their own private pool and have been constructed and adapted to the granitic rocks on the site creating a unique accommodation concept. LCD TV, mac mini, mini-bar, tea and coffee facilities, Nespresso machine with capsules, complimentary electric buggy and complimentary WI-FI.

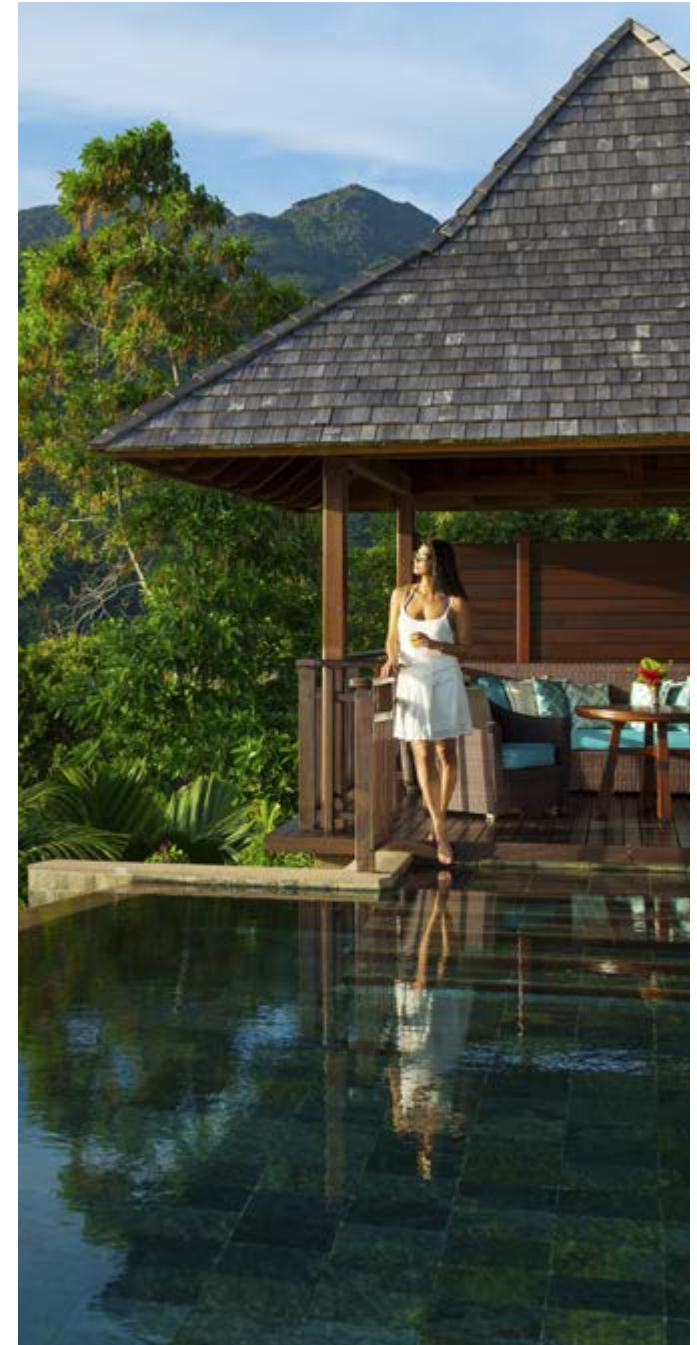
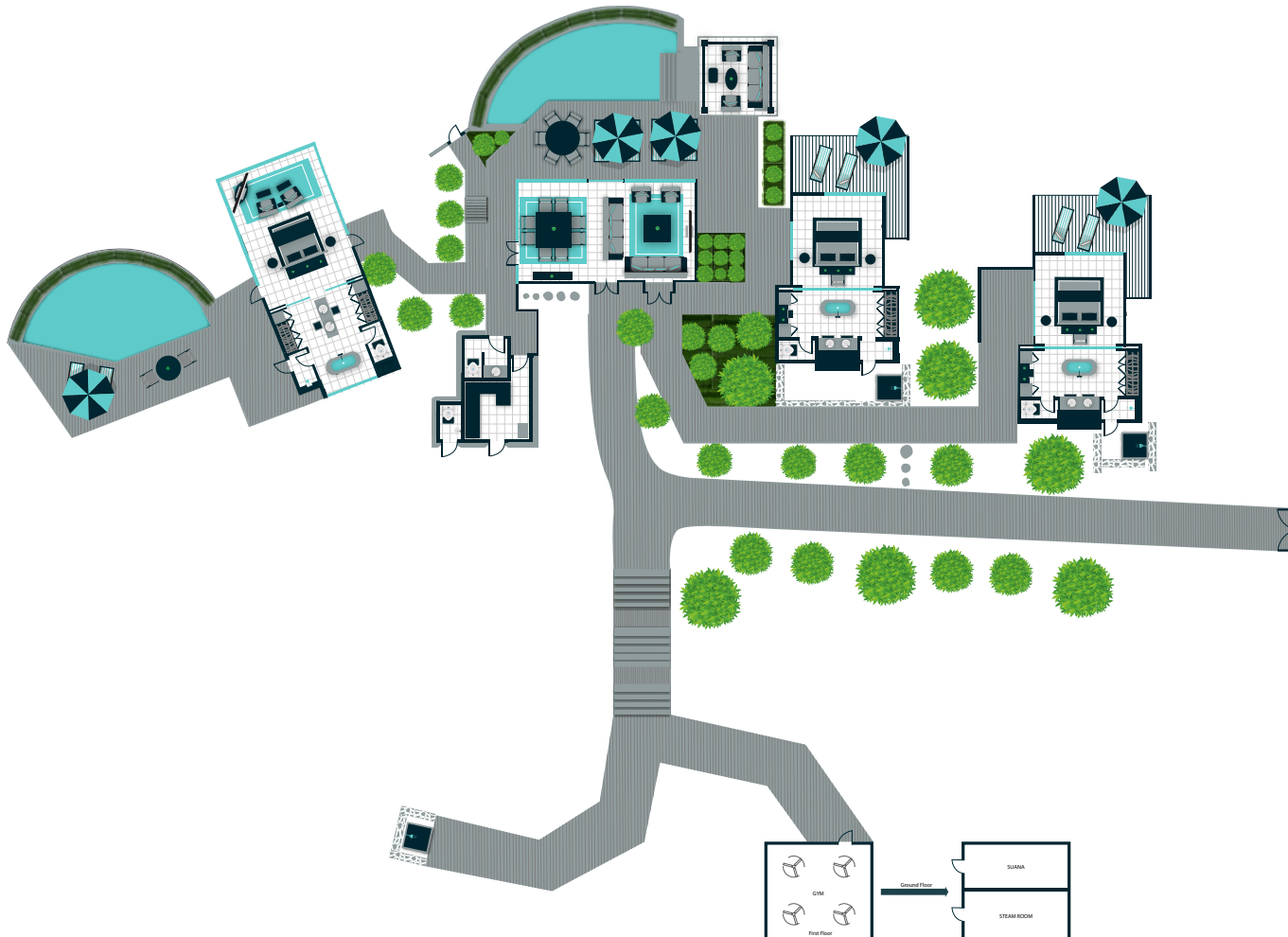


## ACCOMMODATION

### 1 PRESIDENTIAL VILLA WITH 2 PRIVATE POOLS

(980m<sup>2</sup>) 3 bedrooms for a maximum of 6 adults

With a breathtaking view of the ocean, the three bedrooms Presidential Villa of 980m<sup>2</sup> has been designed to offer a unique experience to the guests. Equipped with LCD TV, mac mini, mini wine cooler with a selection of wine, mini-bar; tea and coffee facilities, Nespresso machine with capsules, complimentary electric buggy, villa host and complimentary WI-FI. The Presidential villa has its own gym, a private steam room & sauna, private pool and deck and outdoor dining kiosk.





## RESTAURANTS

*Constance Ephelia has five restaurants and bars. Each outlet has its own individual concept, design and décor, thereby optimising the possibilities in terms of culinary and bar experiences. The designs reflect elegance and functionality along with a subtle touch of African influence. Each restaurant name has a subtitle, reinforcing the concept in just a few words. The resort is very much “child friendly”, and offers different menus to appeal to different ages – including gourmet baby food – are proposed throughout the resort.*

### Corossol

Corossol is Ephelia's main buffet restaurant offering breakfast and dinner. A “live cooking and themed dinner buffet” which offers dishes from different cuisine of the world – from tandoori to pizza, it's a real harmony of flavours. The dining area is spread around in different sections and features various types of seating and offers a variety of ambiance.

Capacity: 380 seats | Dress code: Casual Chic  
Opening hours: Breakfast: 07h00 – 10h30 / Dinner: 18h30 – 22h00

### Helios

Helios is a casual chic restaurant offering a “Mediterranean theme” and is located on the South side of the resort. Open for lunch with a nice buffet where ingredients and influence from the South of France, Italy, Spain, Morocco and Lebanon mixed with whole fishes and dishes baked in their large oven. For dinner, the same influences are offered via a very nice “A la Carte” menu.

Capacity: 70 seats | Dress code: Casual Chic  
Opening hours: Lunch: 12h00 – 15h00 / Dinner: 18h30 – 22h00

### Adam & Eve

Adam & Eve our “Asian cuisine” restaurant is embedded in a natural loving structure embracing the elements. One of the distinctive features of this restaurant is the open kitchen that engages in the preparation of the food. The concept focuses on the flavours of South East Asia with an emphasis on Malaysian, Thai, Singapore and Indonesian cuisine with an “A la Carte” menu offered for lunch and dinner.

Capacity: 70 seats | Dress code: Casual Chic  
Opening hours: Lunch: 12h00 – 15h00 / Dinner: 18h30 – 22h00

### Seselwa

Seselwa “cuisine des îles” is an all-day dining restaurant with a casual and lively ambiance facing the gorgeous North beach. Designed with white furniture and flowery cushions, it evokes freshness and the spirit of Seychelles. Breakfast is served buffet style for our guests staying in our Senior Suites and Villas. At lunch and dinner it offers Creole specialities, grilled local best ingredients and island flavours, either via an “A la Carte” menu, set menus or live buffet.

Capacity: 120 seats | Dress code: Casual Chic  
Opening hours: Breakfast: 07h00 – 10h30 / Lunch: 12h00 – 15h00 / Dinner: 18h30 – 22h00

### Cyann

Cyann our “Signature cuisine” restaurant offer a unique concept next to our amazing beach of Port Launay. For lunch the place offer, in a casual atmosphere, a well known Sushi selection and some delightful classic & light dishes. At dinner time the restaurant turns into an elegant and refined venue and proposes a selection of signature dishes that combine the precision of French culinary techniques with the lightness and flavours of all around the world influences.

Capacity: 50 seats | Dress code: Elegant/Formal  
Opening hours: Lunch: 12h00 – 15h00 / Sushi: 12h00 – 16h00  
Dinner: 18h30 – 22h00

## OTHERS

### South Beach & Pools

Our team located all along the South beach and at our different pools, is also providing some food and beverages service. Please ask for their help when times come to enjoy a drink, a lazy lunch or afternoon snacks without moving from your sun bed.

Opening hours: 09h00 – 18h00 / Pool snack menu: 12h00 – 17h00 / Beverage list: 10h00 – 18h00





## BARS

### Zee bar

The Zee bar is open all day until late evening, offering a nice selection of drinks and creative range of cocktails. During the day, it's also the place to enjoy while seating on the deck, a classic snack with for example a fresh mojito. In the evening, experience our daily themed nights and enjoy live music in a casual and relax atmosphere.

Opening hours: 08h00 – 00h00

Early continental breakfast: 04h30 - 12h00

Snack menu: 15h00 - 20h00 | Live entertainment: 20h30 – 23h00

### Helios bar

Located next to the restaurant, the Helios bar offers a classic selection of drinks and cocktails. Please do not hesitate to ask our bartender for his favourite freshly brewed ice teas. A nice place along the pool to enjoy an aperitif before dining in the restaurant.

Opening hours: 10h00 – 23h00

### Adam & Eve bar

This bar is part of the restaurant of the same name, with a pool view and facing the beach. A place to enjoy a selection of drinks and cocktails all day long. A nice atmosphere for a great time.

Opening hours: 10h00 – 23h00

### Seselwa bar

Seselwa bar is part of our restaurant with the same name, located right on the beautiful North beach. A unique place to enjoy a chilled beer, a tropical cocktail or a wide selection of homemade rums while listening to Creole tunes.

Opening hours: 10h00 – 23h00

### Cyann bar

Attached to our Signature restaurant, the Cyann bar features a unique selection of Gin and Gin cocktails, as well as rare spirits, sake and cocktails. It's also the place to enjoy a glass of wine, especially selected by our sommelier. Our wine cellar features over 26,000 bottles with 1,200 references from more than 250 wineries.

A warm environment where times seems to have disappeared in the evening with a nice glass in hand.

Opening hours: 10h00 – 23h00

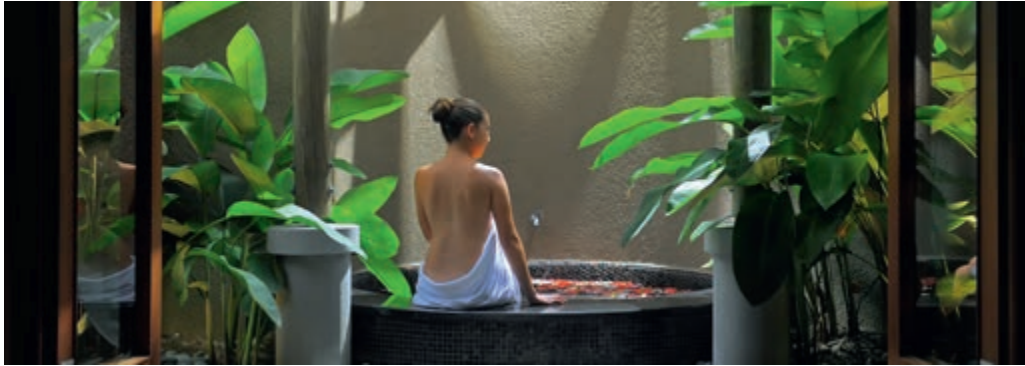
### Kabana bar

Kabana is a beach feeling lively place offering a choice of cocktails and beverages. Located right in front of Port Launay beach, the place is surrounded by some tables, chess game, bocci ball field, beach volley, badminton and kids play ground.

Opening hours: 10h00 – 18h00



## CONSTANCE SPA



The beautiful spa village at Constance Ephelia is set in the tranquil heart of the resort's stunning tropical gardens. Relax, rejuvenate, detox, re-hydrate or simply enjoy – the choice is yours. Our highly skilled team is at your disposal to help you decide which treatments are best suited to your needs. Each guest receives a Spa Experience Card, so we can keep a note of your wellness goals and preferences, and customise your treatments accordingly.

### TREATMENTS

Choose from a wonderful range of Constance Spa Classic massages, facials and body treatments using our aromatic natural products inspired by plants from the Indian Ocean, which offers spa care treatments that bring your mind and body to a state of perfect relaxation and complete equilibrium. Or pick from the French luxury skincare brand Sisley collection and offering a lush range of phyto-aromatic facials and body treatments.

### SPA FACILITIES

- 14 single treatment rooms
- 4 double treatment rooms
- Sauna
- Steam room
- Thermal pool
- Jacuzzi
- Cold plunge pool
- Kneipp foot path
- Reflective pool

### FITNESS FACILITIES

Spa Yoga pavilion

### OPENING HOURS

For treatments: Daily 10h00 to 21h00

For wet and wellbeing area: Daily 10h00 to 14h00. As from 14h00 onwards exclusively for guest with a booking.

For fitness: Daily 07h00 to 20h00 | Gym access: 24hrs Limited to 16 years old and above.

## SPORTS & LEISURE



### COMPLIMENTARY

- Fully equipped gymnasium
- 4 tennis courts
- Squash court
- Non-motorised watersports, such as; pedal boats, small sailing catamaran, windsurfing and kayak.

### PAYABLE

- Fishing
- Diving (PADI) with supplement,
- Tennis lessons
- Yoga lessons
- Bicycles  
*Bicycles' conditions: Bicycles are provided free of charge for villa guests only. All Tropical Garden rooms, Junior suites and Senior suites guests may rent bicycles from our Fitness centre for use within the hotel premises only.*
- Wall climbing
- Zip lining - For guests of all abilities from 3 years to 70+ and instructors available.
- Mangrove Kayaking - Available only for a few days per month, depending on the tide level



## CONSTANCE KIDS CLUB



Young guests ages 4-11 are invited to unleash their spirit and adventure at Constance Kids Club. Fully trained and enthusiastic Coordinators will lead trips of island exploration, local crafts, culinary activities and scavenger hunts to name a few that will engage with their exciting, exotic holiday location. Discovery will be a key part of each daily theme.

Amenities & Services of Constance Kids Club include:

- Registration at any time during your stay to ensure that kids are ready to participate and play.
- Safety and security is our number one priority.
- Swimming pool for free play, relays, tag games and more.
- Open play areas to show off talents, play interactive games, show movies and create a kid's circus!
- Playstation and Nintendo Wii for gaming activities.
- Arts & Crafts with local and traditional crafts.
- Day and evening themed programs.
- A theme day to create pizzas, crepe making and enjoy some smoothie sweets and treats.
- An imagination space for the younger 4-6 year old guests, which may include playhouses, kitchenettes, tool workshops and even some 4-wheel transportation rides.
- Age appropriate washrooms for just their size.
- Outdoor space for running relays, games and playground for parental supervision play.

## FACILITIES



- 5 boutiques. 2 in the North area close to the Concierge and 3 in the South within the main building. Offering a range of Constance Hotels and Resorts branded garments as well as other branded items, including 'Kankan' ([www.kankan.sc](http://www.kankan.sc)) & 'JOUEL' ([www.islandjouel.com](http://www.islandjouel.com)).
- 5 pools
- Courtesy lounge
- Internet Access
- Infirmary
- Conference facilities
- Laundry and pressing
- Helipad
- ATM
- Car rental facilities

## USEFUL INFORMATION



- Voltage on the island: 220 volts.
- Local currency: Seychelles Rupee.
- Time difference: +4 GMT.
- A valid international license is required to rent cars.
- Temperature: between 24°C and 30°C year round.

### PAYMENT AT THE HOTEL

Accepted currencies: Euro, US Dollar (*US Dollar 2007 Series or above only*), Seychelles Rupees & UK Pounds.

Traveller Cheques: Not accepted

Credit Card: American Express, MasterCard, Visa, Maestro, Union Pay.

All prices are communicated in Seychelles Rupees and inclusive of 15% VAT and 10% service charge.

A Tourism Environmental Sustainability Levy of SCR 100 per person per night will be charged directly to guests at the hotel upon check-out.

### NATIONALITIES AT RESORT

Languages spoken: English, French, Italian, Russian, Arabic, Chinese, German, Spanish speaking.

### DRONES

Due to air safety regulations in the Seychelles, no drone usage are allowed.

CONSTANCE  
EPHELIA  
MAHÉ, SEYCHELLES



- |  |                       |                              |
|--|-----------------------|------------------------------|
| CONSTANCE SPA                            | ATM                   | BUS STOP                     |
| FITNESS CENTRE / GYM / LAP POOL / SQUASH | CONFERENCE CENTRE     | DANGER                       |
| SCENIC VIEW                              | RESTAURANT & BARS     | NO ENTRY                     |
| KIDS JUNGLE GYM                          | BOUTIQUES             | SHUTTLE ROUTE                |
| SECURITY POST                            | RECEPTION             | LIESURE TRAIL                |
| ROCK CLIMBING                            | BOATHOUSE             | EPHELIA NATURE HIKE          |
| ZIP LINE                                 | GUEST ASSEMBLY POINTS | KAYAK ROUTE (High Tide Only) |

Driving in Seychelles is on the LEFT SIDE of the road.

**DROWNING RISKS**  
BE AWARE OF TIDE MOVEMENTS  
AVOID GOING INTO THE SEA AT HIGH TIDE  
NO SWIMMING & SNORKELLING WITHIN 100 METRES OF THE REEF

True by Nature





CONSTANCE EPHELIA | FACTSHEET  
NOVEMBER 2023